



P0312 SeraQ Elecsys Syphilis



REF P0312



The kit insert contains a detailed protocol and should be read carefully before testing the run control to ensure optimal performance



Table of contents

Intended Use.....	3
Key to Symbols Used.....	3
Principle of method.....	3
Traceability of antibody concentrations.....	4
Materials Provided.....	4
Materials not provided.....	4
Storage Instructions.....	4
Warning and precautions.....	4
Test Procedure.....	5
Expected assay response values.....	5
Interpretation of Results.....	5
Analytical Performance Characteristics.....	7
Limitations.....	9
References.....	10

Intended Use

P0312 SeraQ Elecsys Syphilis is intended to be used on the Roche cobas platform as an external run control in combination with the assay for the detection of antibodies to *Treponema pallidum* (see Table 1) performed in diagnostic and blood screening laboratories. P0312 SeraQ Elecsys Syphilis is a single-marker dilution of an internal anti-*Treponema pallidum* standard in defibrinated plasma giving a low reactive result in the Roche Elecsys Syphilis assay. The run control is intended to be tested in consecutive runs of the immunoassays over time. By comparison of the sample to cut off (S/CO) values found on P0312 SeraQ Elecsys Syphilis one can monitor the consistent analytical sensitivity of test runs. The run control should not be used to replace internal controls or calibrators in the test kits.

Table 1 Test kits covered by this run control

Equipment	Agent	Tests
cobas	<i>Treponema pallidum</i>	Roche Elecsys Syphilis

Key to Symbols Used



Manufacturer



Lot number



Catalogue number



Performance evaluation only



Store below -20°C



Expiry date



Contents



Caution



Read instructions for use

Principle of method

A number of SeraQ run controls have been designed for monitoring the performance of different anti-*Treponema pallidum* assays. The run control tubes are barcoded and can be placed at random positions in sample racks of the blood screening device. The tubes are comparable in size to donor blood collection tubes. The run controls are designed to mimic naturally occurring serum specimens with low reactivity for anti-*Treponema pallidum*. The analytical sensitivity of test kits from different manufacturers varies and therefore for each test kit a separate single marker run control has been designed. The SeraQ run control series includes the product P0312 SeraQ Elecsys Syphilis for which the composition is optimised for use with the Roche Elecsys Syphilis test system. The P0312 SeraQ Elecsys Syphilis run control is designed to generate assay response values (i.e. S/CO ratios) positioned in the low positive range of the assay. Routine use of external run controls enables laboratories to monitor day-to-day test performance and IVD batch variation.

Traceability of antibody concentrations

For anti-Treponema pallidum, an internal serum standard has been established¹ from which reference panels and run controls are prepared by gravimetrically recorded dilution steps. No unitage could be assigned to the internal standard for anti-Treponema pallidum since international reference preparations are not available. The consistent concentration of the analytes in consecutive SeraQ run control batches is guaranteed by batch release control testing against suitable reference samples kept frozen at -30°C. These reference samples are derived from the same undiluted internal standards that are used for manufacturing of the SeraQ run controls.

Materials Provided

The run control contains 2.0 mL of P0312 SeraQ Elecsys Syphilis run control and 0.01% (w/v) Thimerosal as preservative. The polypropylene tubes with screw caps are provided in two formats as detailed in Table 2.

Table 2. Description of kit formats and contents

Cat. Code	Description of contents	Primary packing	Secondary packing
P0312/01	60 x 2.0 mL run control	10 mL vial	60 vial rack in box
P0312/02	10 x 2.0 mL run control	10 mL vial	10 vial in box

Materials not provided

Pipettes or pipetting devices for use in IVD test systems.

Storage Instructions

Store unopened tubes at or below -20°C. After use, the run control tubes should be stored to 2°C to 8°C (< 1 month).

Warning and precautions

P0312 SeraQ Elecsys Syphilis run controls are prepared from an internal serum standard, in which the bacterium has been inactivated by refrigerated storage¹. The serum matrix in the run controls has been tested for infectious disease markers by serologic and molecular screening methods. However, no screening procedure can offer complete assurance that products derived from human blood cannot transmit undetected infectious agents.

- SeraQ run controls should be handled with the normal preventive measures in a serology laboratory^{2,3}.
- This product contains human plasma and traces of biological source material of non-human origin (bovine thrombin).
- The use of the run control in other assay configurations should be avoided and is not supported by the manufacturer.
- Wear disposable gloves when handling samples.
- Do not eat drink, smoke or apply cosmetics in areas where specimens are handled.
- Do not pipette by mouth.
- If skin or mucous membrane exposure occurs, immediately wash the area with copious amounts of water.
- Disinfect spills using a 0.5% hypochlorite solution (1:10 v/v household bleach) or equivalent disinfectant.
- Dispose unused or spilled materials according to the normal practices for biological waste disposal in your institution.

- If precipitates are visible, mix the run controls for 2 minutes thoroughly.
- Do not use run controls beyond one month storage at 2-8°C.
- Store run controls in an upright position.
- Validation of the diagnostic test results must be based on the specifications set by the manufacturer of the test kit.

Test Procedure

- Allow a run control tube to adapt to room temperature.
- Mix the tubes thoroughly prior to use (any visible precipitate will then easily disappear).
- For automated test systems, place the run control tube at the specified positions in the sample racks for regular donor or patient samples. Otherwise, pipet run controls manually as with regular test specimens at the target position in test plates.
- Test on the Roche cobas platform with the assay mentioned in Table 1 according to the manufacturers instructions
- Store the opened tube immediately after use at 2-8°C (see storage instructions).

Expected assay response values

The expected S/CO value on the P0312 SeraQ Elecsys Syphilis run control is between 2.1 and 3.2. Each batch of Roche Elecsys Syphilis has its own dose response curve and distribution of S/CO values on SeraQ run controls. This depends on the analytical sensitivity of the Roche reagent batches that are in use. P0312 SeraQ Elecsys Syphilis serves as an independent external run control for monitoring consistent analytical sensitivity of Roche reagent batches over time.

Interpretation of Results

Calculations

Subsequent test runs can be analysed by appropriate statistical approaches on the S/CO ratios obtained on the external control samples. Calculations should be made within each Roche Elecsys Syphilis batch.

Assay response values

To obtain the Roche Elecsys Syphilis batch specific reference values for each marker, an initial collection of 10-30 consecutive test results is required. Upon collecting additional data the chart characteristics may be updated.

The S/CO values for anti-Treponema pallidum are 'log normally' distributed. For the Roche Elecsys Syphilis assay one should use the logarithm of S/CO ratios for calculation of the geometric mean and confidence interval.

- Calculate from each measurement the log S/CO value.
- Calculate average and standard deviation on these log transformed values; log (Average) and log (Standard Deviation).
- Calculate the (geometric) mean in S/CO ratio by taking the anti-log value of the log (Average)
- Use Table 2 to obtain Student-t-values belonging to the 95% and 99% CI for different number of observations (n)
- Calculate the log(95% and 99% CI) as follows:
 Log (99% Lower limit): $\log(\text{Average}) - (99\%) \text{ Student-t-Value} \times \log(\text{Standard Deviation})$
 Log (95% Lower limit): $\log(\text{Average}) - (95\%) \text{ Student-t-Value} \times \log(\text{Standard Deviation})$
 Log (95% Upper limit): $\log(\text{Average}) + (95\%) \text{ Student-t-Value} \times \log(\text{Standard Deviation})$
 Log (99% Upper limit): $\log(\text{Average}) + (99\%) \text{ Student-t-Value} \times \log(\text{Standard Deviation})$

- Take the anti-log values for calculating the confidence limits in S/CO ratio. To visualize the individual S/CO values make a Levey-Jennings control chart on a linear scale. S/CO ratios plotted on a linear scale depict the upper 95% and 99% confidence limits at greater distance from the geometric mean S/CO value than the lower confidence limits (see example Figure 1).

Levey-Jennings chart

The Levey-Jennings chart is a graph in which quality control results are plotted over subsequent test runs in time to give a visual indication when a laboratory test is (not) working well. The data points for each test run in the scatter plot below (Figure 1) show the distance from the geometric mean S/CO ratio (green line in graph) which is the expected response level for the run control. The orange and red lines represent the 95% and 99% CI, respectively. The data represents individual measurements of three instruments within one test batch.

Table 3. Relation of Student t value and numbers of runs (n) to calculate confidence intervals.

Runs (n)	t-value at 95% CI	t-value at 99% CI
10	2.306	3.355
20	2.101	2.878
30	2.048	2.763
Infinite	1.960	2.576

Infinite equals the normal distribution

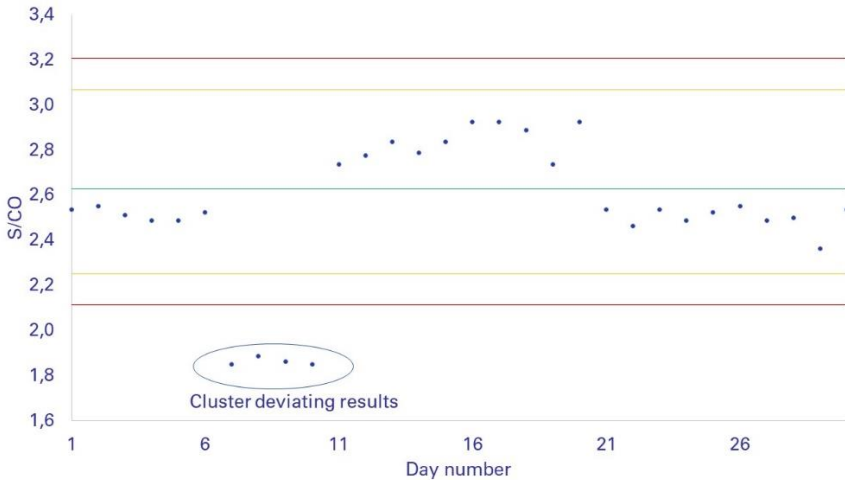
Interpretation

Knowing the 95% and 99% CI for generating a Levey-Jennings chart one can use Westgard rules⁴ to interpret values outside the confidence limits for identifying trends and aberrant results. One can find guidance on how to identify trends and outliers on the website www.westgard.com.⁴

- Negative or positive trends resulting from gradual changes in test performance and not reported by the internal kit controls and/or alert systems in the test robot, are indicative for a lack of maintenance, the need for recalibration of equipment, or degradation of reagents. These are systematic errors. In case a trend is recognised, the laboratory is encouraged to identify the root cause of the deviation.
- Aberrant results like a negative response on the run control or a result outside the range of 99% CI are indicative for (incidental) random errors that need further investigation to identify the root cause.

The identification of the root cause of aberrant results is beyond the scope of the intended use of the run controls.

Figure 1 Example Levey-Jennings chart of Roche Elecsys Syphilis assay on P0312 SeraQ Elecsys Syphilis run control.



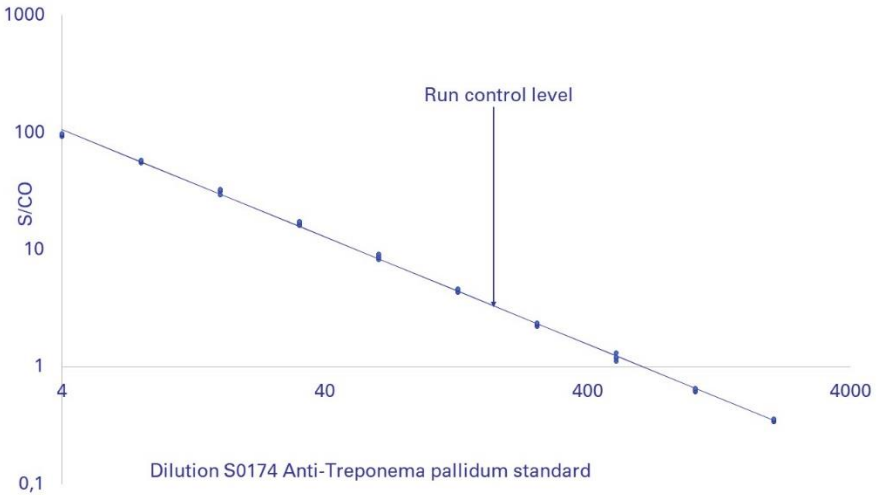
Analytical Performance Characteristics

SeraQ run controls have been designed by examination of the response curves on dilutions of the internal (secondary) standards and as such relate to the analytical sensitivity of immunoassays. In the following paragraphs the essential analytical performance characteristics of SeraQ run controls are presented.

Dose response and analytical sensitivity

By analysing standard dilution series the relationship between S/CO values and concentration of the analyte can be established^{5,6}. Plotting (transformed) S/CO values against (log) concentration analyte using linear regression analysis enables calculation of correlation coefficients. It is recommended to use a transformation resulting in an optimal correlation. Figure 2 show linear dose response relations in the Roche Elecsys Syphilis assay obtained after log transformation of dilution and S/CO values.

Figure 2. Dose response in Roche Elecsys Syphilis assay. Log Elecsys Syphilis S/CO values are plotted against log dilution ($r^2 = 0.999$).



Variation in immune-assay reagent batches

Variation in S/CO ratio on run controls reflects the difference in analytical sensitivity of assay runs and reagent batches. Different batches of SeraQ run controls are prepared from the same standards. As a consequence the composition of the multi-marker run controls is consistent from batch to batch. This is confirmed by multi-variance analysis on large data sets showing that immuno-assay reagent batches are the major source of variation in analytical sensitivity. Figure 3a and 3b show examples of the S/CO distribution for four different Abbott PRISM HBsAg reagent batches and two SeraQ run control batches. Similar results were observed for other serologic assays.

Figure 3a. Frequency distribution of HBsAg S/CO ratios on one batch of SeraQ run control and four PRISM batches (n=1992)

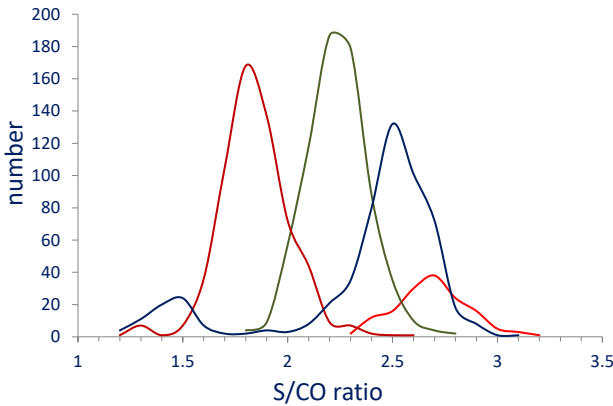
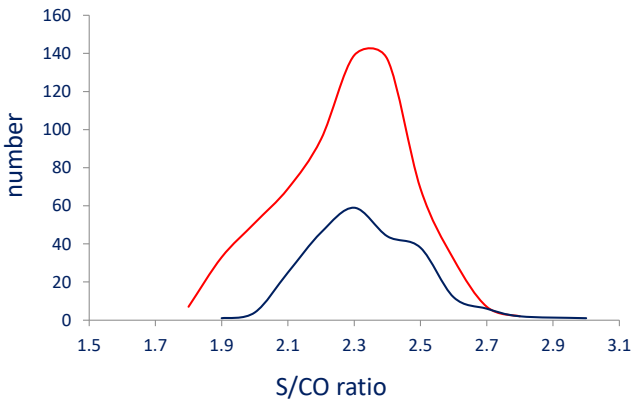


Figure 3b. Frequency distribution of HBsAg S/CO ratios on two batches of SeraQ run control and one PRISM batch (n=879)



Thus, the variability in results is mainly caused by differences in test batches.

Limitations

SeraQ run controls were designed for monitoring the analytical performance of IVD kits. They cannot be used to evaluate the diagnostic sensitivity of IVD kits. The run control must not be substituted for the mandatory controls or calibrators provided with IVD test kits for calculating the cut off and/or criteria for releasing test results. The response values on the run controls should not be used to release or reject the test run but can be used as an aid in the assessment of analytical performance.

References

1. Van Drimmelen A.A.J., Lelie P.N. Preparation of inactivated secondary viral standards: Safety assessment of quality control samples for viral serology and NAT assays in blood screening laboratories. BQC document number CE4006.
2. Centers for Disease Control (CDC). Update: Universal precautions for prevention of transmission of human immunodeficiency virus, hepatitis B virus, and other blood borne pathogens in health-care settings. MMWR 1988; 37:377-388.
3. Centers for Disease Control (CDC). Guidelines for prevention of transmission of human immunodeficiency virus and hepatitis B virus to health-care and public-safety workers. MMWR 1989; 38(S-6): 1-36.
4. Westgard rules, www.westgard.com
5. Plikaytis B.D., Turner S.H., Gheesling L.L., Carlone G.M. Comparisons of standard curve-fitting methods to quantitate *Neisseria meningitidis* group A polysaccharide antibody levels by enzyme-linked immunosorbent assay. J Clin Microbiol. 1991 Jul;29(7):1439-46
6. Bank HL. A quantitative enzyme-linked immunosorbent assay for rat insulin J Immunoassay. 1988; 9(2):135-58.



Biologicals Quality Control B.V.
Droogmakerij 31h
1851 LX Heiloo
The Netherlands

Tel: +31 (0)72 2020 730
Fax: +31 (0)72 2020 731
E-mail: info@bioqcontrol.com
Internet: www.bioqcontrol.com

K14278
V2.1 October 2019